

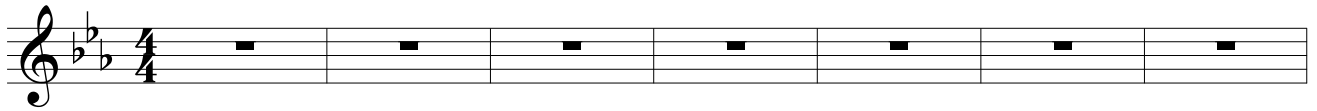
Mr. Blue Sky

Words and Music by: Jeff Lynne

Arranged by: Ron Hanssen

Bright Shuffle (♩ = ca.176)

+ Drums



8 *mf*
Sun is shi-ning in the sky, hey No, there ain't no cloud in-sight, in -

13
sight. it's stopped rai-nin; ev'-ry - bo-dy's in a play and don't you know it's a

18
beau-ti - ful new day, daht daht daht hey hey hey hey Run - nin' down the

22
av - e-nue, see how, see how the sun is shi-nin' bright-ly in the ci - ty on the

27
streets where once was pit - ty Mis - ter Blue___ Sky is liv-ing here to-day.

31
— Hey, hey. — please tell us why

35
— you had to hide ___ a-way for so long, Where did we go wrong?

40

please tell us why you had to hide a-way for

45

so long. Where did we go wrong? *Whistle*

51

Hey you with the pret-ty face, wel-come to the hu - man *Whistle Whistle*

57

Whistle

63

Hey you with the pret-ty face, wel-come to the hu - man

67

race. A cel-e-bra - tion, Mis-ter Blue Sky's up there wait-in' and to-day

71

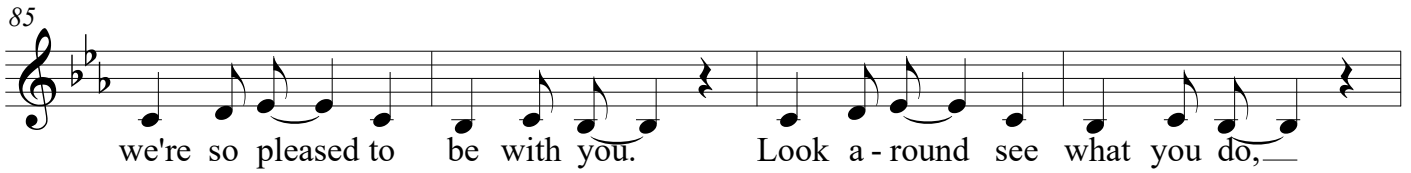
is the day we've wait-ed for. Ah ha

76

please tell us why you had to hide a-way for so long,

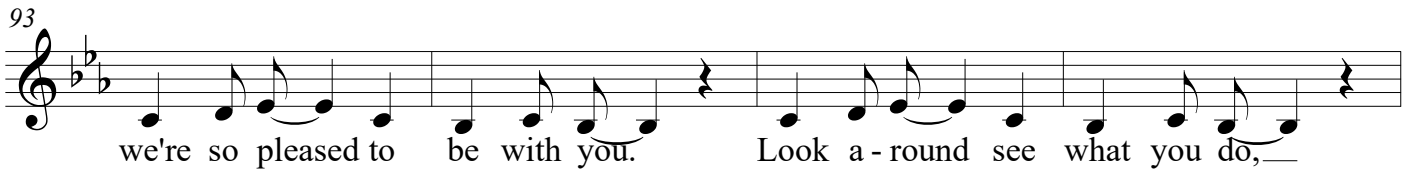
80

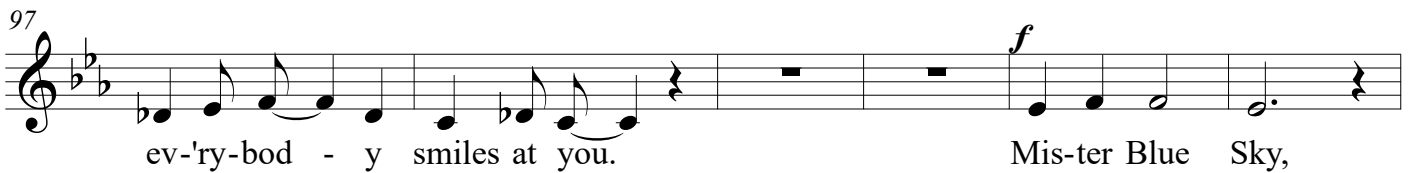
Where did we go wrong? Hey there Mis-ter Blue,

85

 we're so pleased to be with you. Look a-round see what you do,—

89

 ev - 'ry-bod - y smiles at you. Hey there Mis - ter Blue,

93

 we're so pleased to be with you. Look a-round see what you do,—

97

 ev-'ry-bod - y smiles at you. *f* Mis-ter Blue Sky,

103

 Mis - ter Blue Sky. Mis - ter Blue

110

 Sky,—— Mis-ter Blue, you did it right, but soon comes

116

 Mis - ter Night,—— Creep-in' o - ver, now his hand—— is on your shoul-

120

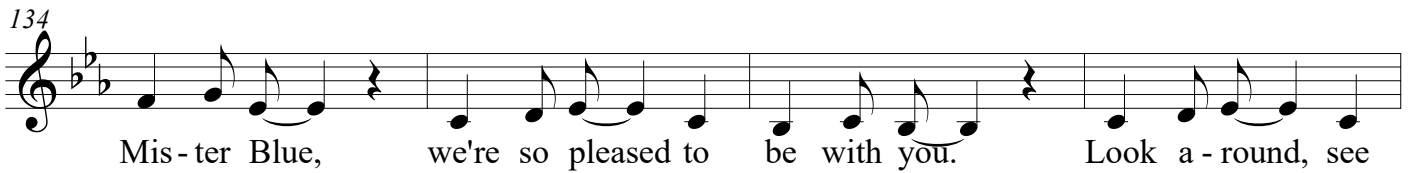
 - der. Ne-ver mind,—— I'll re-mem - ber you this, I'll re-mem-

124

 - ber you this way. *mf* please tell us why—— you had to hide

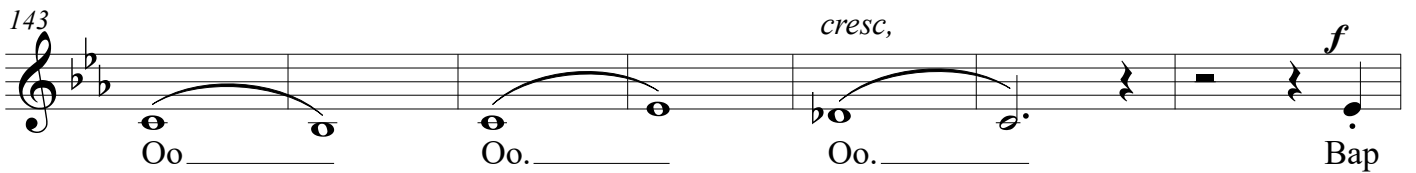
128

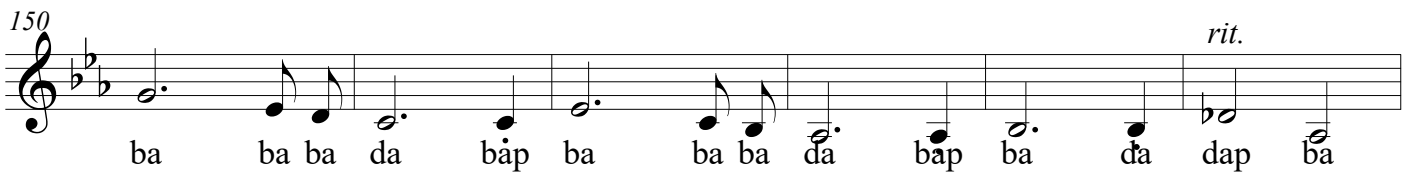
 — a - way for so — long. Where did we go wrong? Hey there

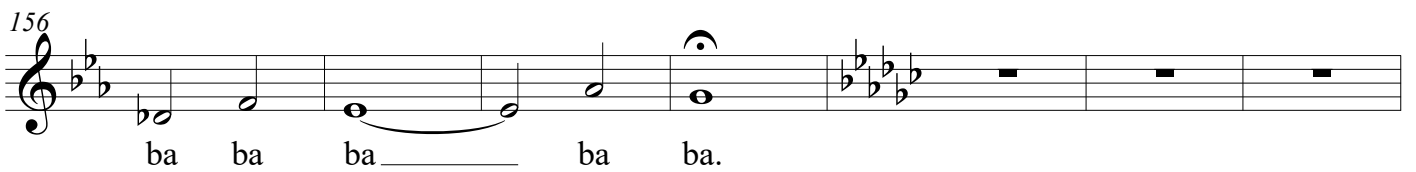
134

 Mis - ter Blue, we're so pleased to be with you. Look a - round, see

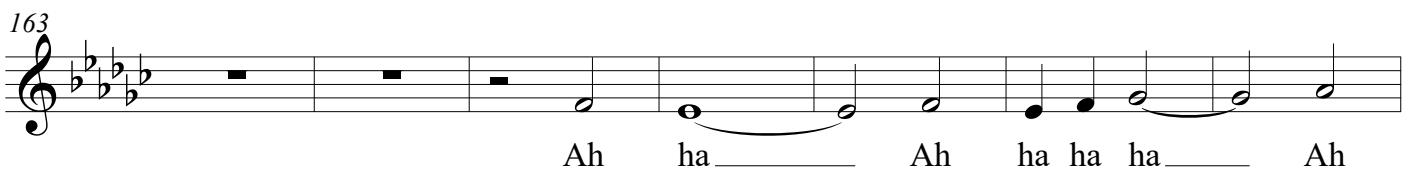
138

 what you do, — ev - 'ry - bod - y smiles at you. Oo. —

143

cresc.
 Oo. — Oo. — Oo. — *f* Bap

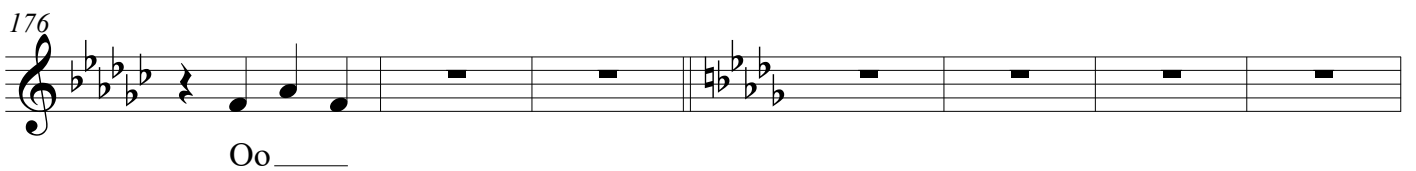
150

rit.
 ba ba ba da bap ba ba ba da bap ba da dap ba

156

 ba ba ba — ba ba.

163

 Ah ha — Ah ha ha ha — Ah

170

 ha — Ah ha ha ha ha ha Oo —

176

 Oo —

183

Mis - ter Blue - Sky - y

The image shows a musical staff in treble clef with a key signature of three flats (B-flat, E-flat, A-flat). The staff contains a sequence of notes: a whole rest, a whole rest, a whole rest, a quarter note G4, a quarter note A4, a quarter note B4, a quarter note C5, and a half note G4. The lyrics 'Mis - ter Blue - Sky - y' are written below the notes, with hyphens indicating syllables across notes. The final note, G4, has a fermata above it.