

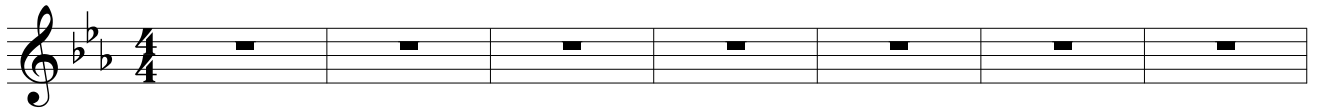
Mr. Blue Sky

Words and Music by: Jeff Lynne

Arranged by: Ron Hanssen

Bright Shuffle (♩ = ca.176)

+ Drums



8 *mf*
Sun is shin-in' in the sky, there ain't a cloud in sight.

13
— It's stopped rain-in', ev'-ry-bod - y's in a play — and don't you know

17
— it's a beau - ti-ful new day. — hey — Run-nin' down the

22
av - e - nue, see how the sun shines bright-ly in the cit - ty on the

27
streets where once was pit - y. Mis-ter Blue — Sky is liv-ing here to-day.

31
— please tell us why — you had to hide

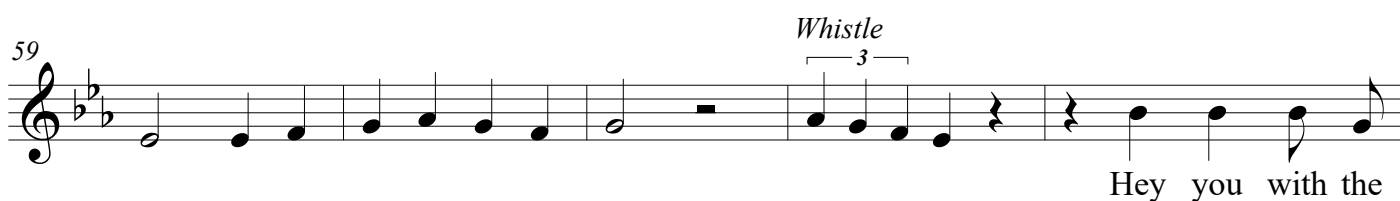
36
— a - way for so long, so long.

42

 please tell us why — you had to hide — a-way for so long, so long.

47
Whistle


54
Whistle *Whistle*


59
Whistle

 Hey you with the

64

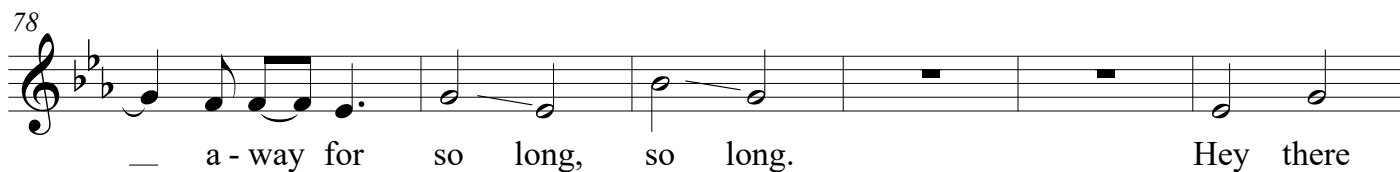
 pret-ty face, wel-come to the hu - man race. A cel-e-bra - tion, Mis-ter

69

 Blue Sky's up there wait-in' and to-day — is the day — we've wait-ed for.

73

 — please tell us why — you had to hide

78

 — a - way for so long, so long. Hey there

84

 Mis-ter Blue, we're so pleased to be with you. Look a - round see

88

what you do, — ev - 'ry - bod - y smiles at you. Hey there

92

Mis - ter Blue, we're so pleased to be with you. Look a - round see

96

what you do, — ev - 'ry - bod - y smiles at you.

101

f Mis - ter Blue Sky, Mis - ter Blue Sky.

108

Mis - ter Blue Sky, — Mis - ter Blue, you

114

did it right, but soon comes Mis - ter Night, — Creep - in' o -

118

- ver, now his hand — is on — your shoul - der. Ne - ver mind, — I'll re - mem -

122

- ber you this, I'll re - mem - ber you this way. *mf* please tell us why

127

— you had to hide — a - way for so — long, so long.

133

Hey there Mis - ter Blue, we're so pleased to be with you.

137

Look a - round, see what you do, — ev - 'ry - bod - y smiles at you.

141

Bap ba ba ba dap ba bap ba ba ba dap ba bap ba

146

ba ba dap ba Oo _____ bap ba ba ba dap ba bap ba

152

ba ba dap ba bap ba ba ba dap ba ba _____ ba da

158

da ba ba.

165

Ah ha _____ Ah ha ha

173

ha ha Oo _____ Oo _____

179

186

Mist - ter Blue - Sky - y

The image shows a single line of musical notation on a five-line staff. The notation begins with a treble clef and a key signature of three flats (B-flat, E-flat, A-flat). The melody consists of five notes: a quarter note on G4, a quarter note on F4, a quarter note on E4, a quarter note on D4, and a half note on C4. The lyrics 'Mist - ter Blue - Sky - y' are written below the staff, with hyphens indicating syllables that span across notes. The piece concludes with a double bar line.